





Logs up to 1m diameter x 8m long
are milled onsite



Elm worktops being prepared





Many varieties of wood are available including European Larch, Elm, Douglas Fir, Oak, Ash, and several other varieties on request. The saw logs are processed into cladding, battens, beams, work / bar / counter tops, and other bespoke creations







Scottish sawmilling services uses responsibly sourced, sustainable timber from Scottish suppliers wherever possible. When local stocks are low, European timber is sourced, using the same exacting standards





Cladding cut to order



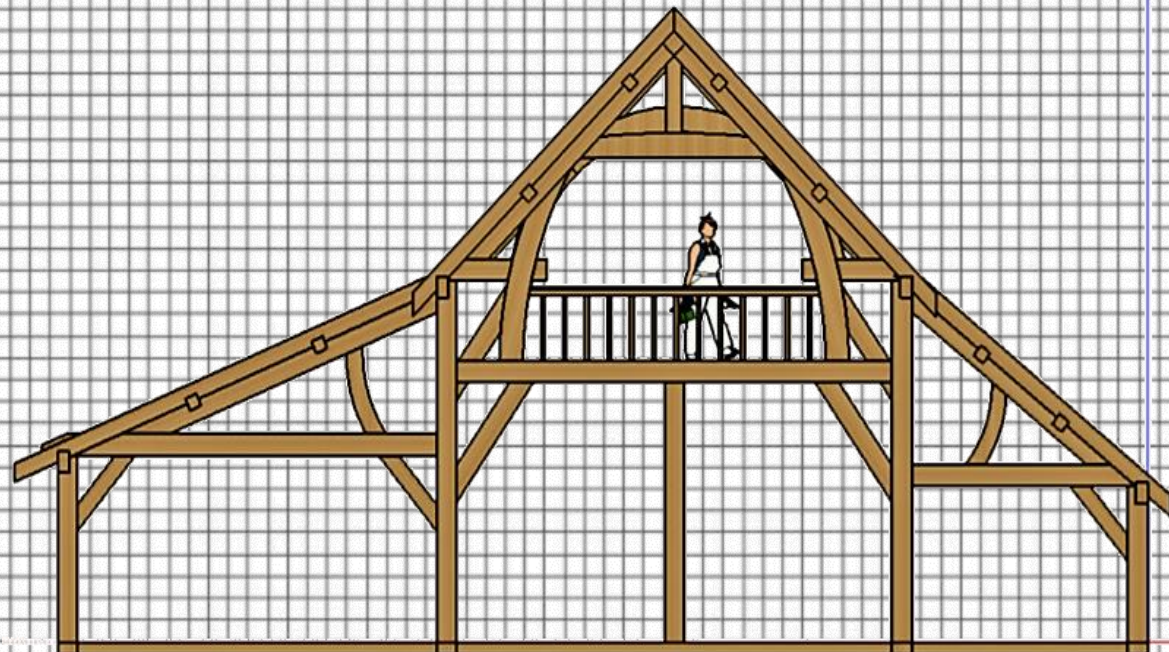
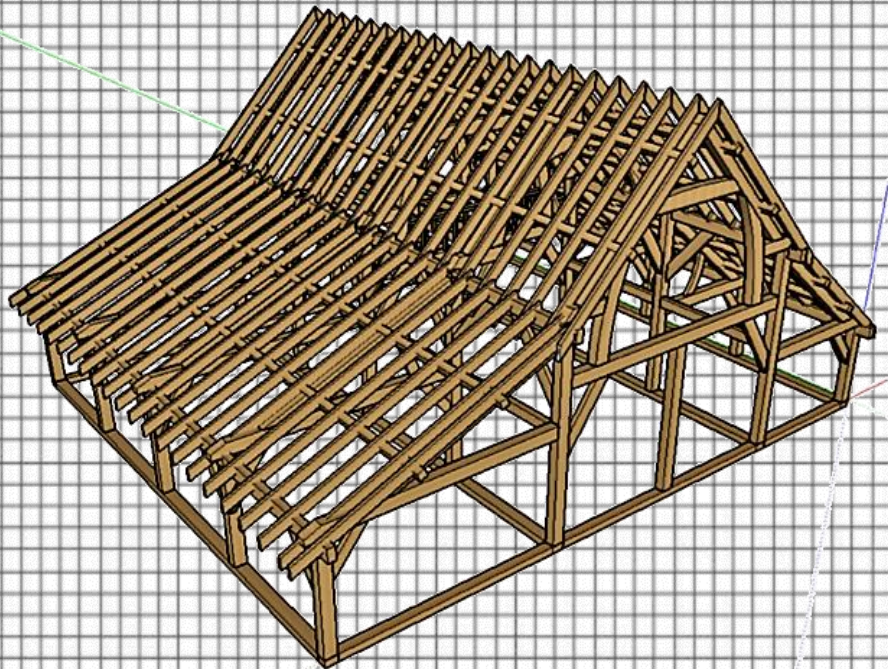
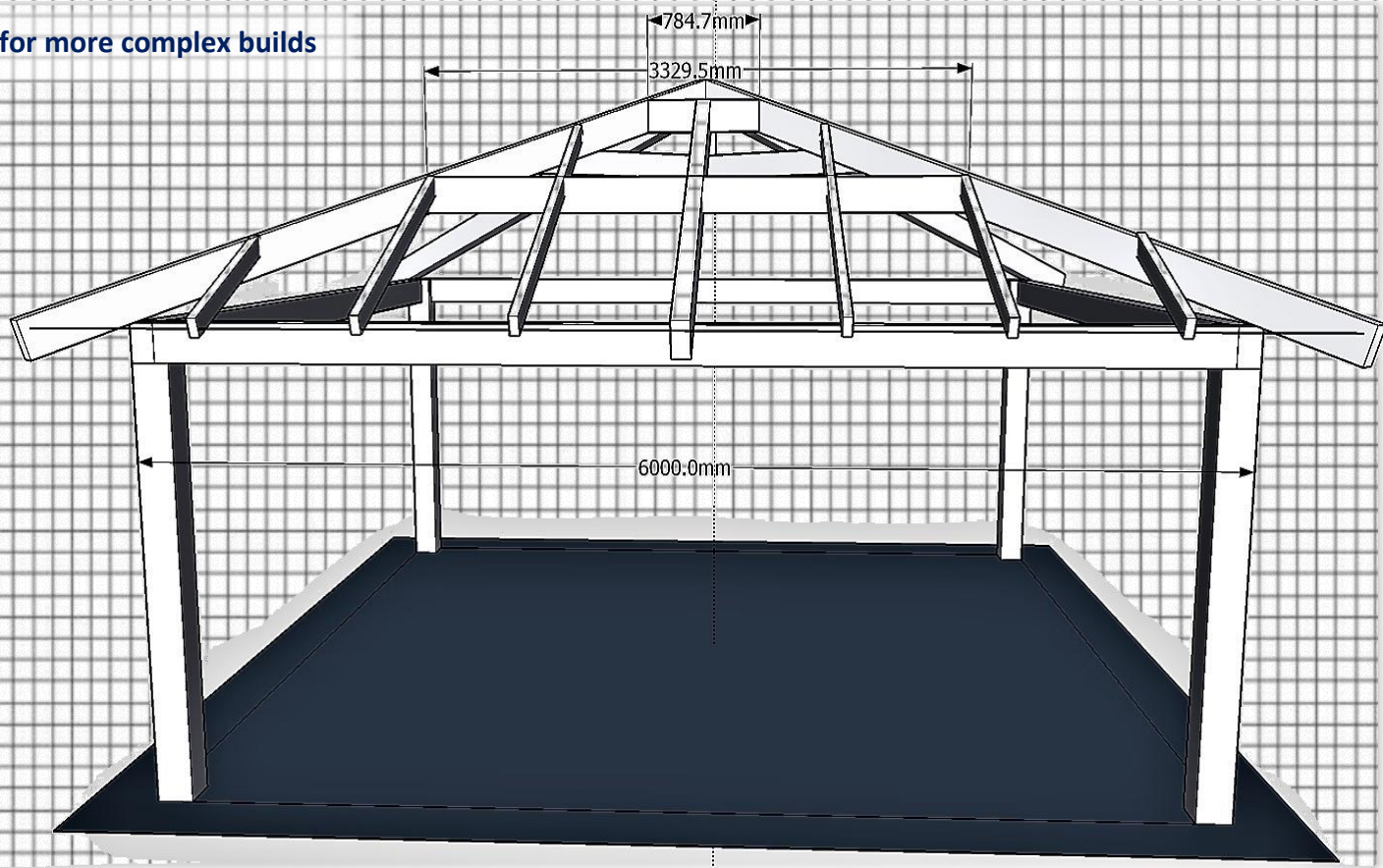


Solid wood flooring and wall panelling (tongue and groove).
Available in Elm, Ash, Oak, Yew, Beech, Spalted Beech, Sweet Chestnut, and Sycamore



Pre-cut, aged and/or kiln dried timber ready for collection in standard sizes

CAD models prepared for more complex builds





Denmylne Farmhouse construction





Green oak sun-room post and beam kit



Green oak sun-room post and beam kit (completed)

Made to order, delivered to your worksite. Posts, beams, joists, pre-jointed, planed, and ready for you to erect



Cabins, camping / glamping pods. Made to your specifications, or to our standard designs



Elm kitchen worktop



Elm table 2m x 2m




Building green oak tables for Lindores Abbey Distillery



The aged effect post-drying



The finished product



Quarter-sawn 1" oak boards (width from 300-500mm).
Perfect for panels and other decorative work.



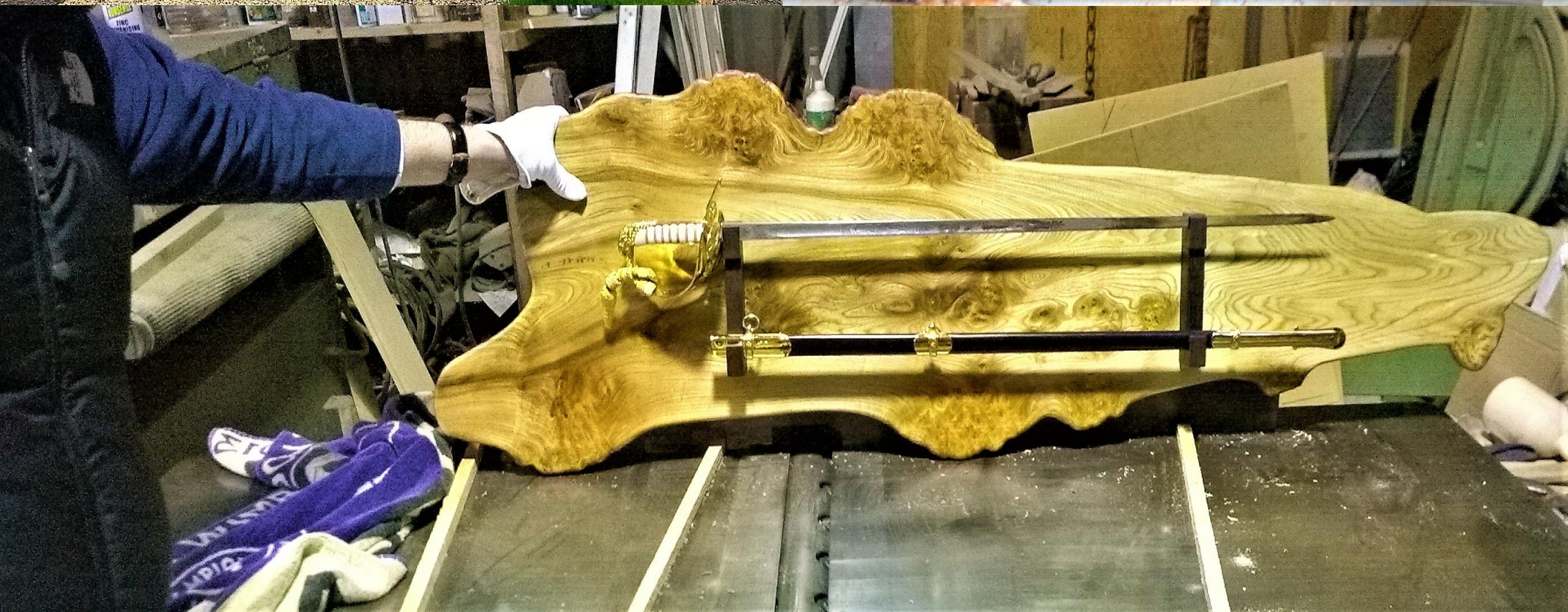
Oak bar counter-top







Fire place surrounds (1700's house)






Dunnage for barrel and cask storage or transportation



Firewood for stoves and heaters from timber offcuts

Dunnage is constructed to customer specifications. Selection of wood types and sizes varies based on seasonality and availability. Moisture content can be regulated through kiln drying. Enquire today to check our current stock



Wood chips or chunks for spit roasts and smoke houses



Wood shavings for small smoking machines and cold smoking



If you're interested in any of the products or services offered in this brochure, or would like to discuss bespoke solutions and projects, please contact me using any of my details below:

Phone: +44 (0) 7708 335 552
Email: denmylne1@gmail.com
Website: www.scottishsawmill.com

Regards, Dennis Anderson
Owner, Scottish Sawmilling Services

Denmylne Farm, Den Of Lindores,
Denmylne, Cupar, Fife, KY14 6HS

Don't forget to like us on Facebook: 
www.facebook.com/ScottishSawmillingServices/